

Yokohama City Municipal Program for Extended-Hours Childcare at Private Kindergartens and Other Facilities (Municipal Extended-Hours Childcare)

~Wakuwaku! Hama Time~ Information

[April 2024 version]

●What is the Yokohama City Municipal Program for Extended-Hours Childcare at Private Kindergartens and Other Facilities?

The Municipal Program for Extended-Hours Childcare at Private Kindergartens and other Facilities (hereinafter referred to “Municipal Extended-Hours Childcare”) is a program implemented by Kindergartens certified by the city of Yokohama and certified combined nursery and kindergarten facilities that meet criteria (e.g. Days and hours of availability of extend-hours childcare, personnel deployment) set by the city of Yokohama.

Extended-hours childcare is available for use by parents of kindergarteners who are unable to take care of their children at home outside regular kindergarten operating hours for reasons such as work or illness.

The extended-hours childcare program is eligible for the “Free Childcare and Child Education Subsidy” that started in October 2019.

Children certified as requiring childcare equivalent to that provided when after admission to a nursery (Types 2 and 3 Qualification for Benefits for the Use of Facilities) are eligible for free extended-hours childcare set by the government. Accordingly, kindergartners with Types 2 and 3 Qualification for Benefits for the Use of Facilities are eligible for municipal extended-hours childcare. Moreover, kindergartners in the city of Yokohama not eligible for free childcare can qualify through city-specific subsidies. (Households paying municipal tax with children who have reached the age of three do not qualify for free childcare.)

In addition, under the free municipal childcare program, facilities receive free benefits (*1) and provide free childcare by “proxy receipt” without charging parents usage fees.

*1: “Benefits for Use of Facilities for Child Rearing” provided for by the Act on Child Education and Childcare and Support have been established in line with Free Childcare and Child Education Subsidy for payment of fees for usage of facilities.

Municipal Extended-Hours Childcare is a program to be used by parents who have “childcare needs.” Municipal Extended-Hours Childcare is available within “timeframes when childcare is required” in accordance with factors such as circumstances of employment.

From the standpoint of the safety of childcare, in cases where availability of nursery teachers cannot be ensured, parents wishing to use the program for the first time may have to wait and are, accordingly, advised to make enquiries as soon as possible.

●About Childcare Times

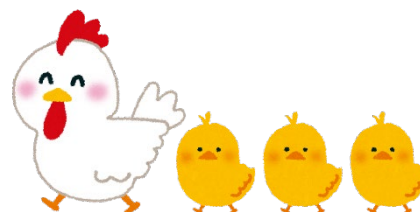
In principle, facilities operate during the following times.

- (1) [Monday – Friday] 7:30 a.m. – 6:30 p.m. (including regular facility operating times)
- (2) [Saturday] 7:30 a.m. – 3:30 p.m. (Saturdays are holidays at “weekday-type facilities”)
- (3) [Long holidays] Facilities also operate during summer, winter and spring holidays

Eligible Ages	7:30 – 9:00	9:00 – 14:00	14:00 – 18:30	From 18:30*2
Children between the ages of 3 and 5	Extended-hours childcare	Regular facility childcare hours	Extended-hours childcare	Overtime childcare

*2 Please ask the facility concerned for details of overtime childcare, times and charges, etc.

- In principle, facilities are closed on Sundays, national holidays and the period from December 29 to January 3.
- Weekday-certified facilities are closed on Saturday and for a maximum of 5 days during the summer holidays.
- Regular education times may differ depending on the facility.



● **About Usage Charges**

[Charges paid by parents]

Households exempt from payment of municipal taxes with a child aged 3 to 5: 0 yen [Eligible for free childcare]

Households with a child aged three paying municipal taxes: 0–9,000 yen

* Please ask the facility concerned for details.

* Separate charges apply for regular education times. [Eligible for free childcare]

* Overtime childcare is provided by some facilities. (Not eligible for free childcare)
Please ask the facility concerned for details of times and charges, etc.



● **About Children Eligible for Extended-Hours Childcare**

Children falling in categories (1) or (2) below are eligible for extended-hours childcare.

(1) Children with Types 2 and 3 Qualification for Benefits for the Use of Facilities (not including children whose parents are on childcare leave)

Parents' Situation
Parents who work 64 or more hours a month, irrespective of whether working at a company or at home
Unwell parents during pregnancy or Parents requiring leave for preparations for birth, or postnatal leave
Parents requiring childcare due to illness, injury or disability
Parents taking care of persons who are ill, disabled or who require nursing care for 64 or more hours a month
Parents whose own homes or neighborhood are undergoing restoration from fire or other disasters
Parents currently seeking employment (between jobs)
Parents who are attending institutions such as universities or vocational training schools for 64 or more hours a month
Parents living in homes where there may a risk of abuse or domestic violence (DV) by their spouse

(2) Children who meet the requirements table below and require childcare
(Including cases in which either of the parents falls into the category of requiring childcare equivalent to that provided after admission to a nursery school)

Parents' Situation (Within a scope of 48 or more hours to less than 64 hours a month)
Parents working, irrespective of whether at a company or at home
Parents taking care of persons who are ill, disabled or who require nursing care
Parents who are attending institutions such as universities or vocational training schools

● **How to Apply**

Please inform the facility concerned why you wish to use extended-hours childcare and consult on the starting date for use as soon as possible.

To use extended-hours childcare, you will need to provide documentation such as a “certificate of (planned) employment” that meets the requirements for use of the Municipal Extended-hours Childcare Program.

(Since you may be required to provide such documentation to both the ward office and the facility concerned, please prepare copies in advance.)

● **Information on matters such as kindergartens, certified combined nursery and kindergarten facilities and extended-hours childcare can be found on the Yokohama City Homepage.**



Yokohama City Municipal Program for Extended-Hours
Childcare at Private Kindergartens and Other Facilities

Search

<Enquiries>

Preschool Education Section, Child-Care and Education Operations

Division,

Child and Youth Bureau, City of Yokohama

TEL: 045-671-2085 FAX: 045-664-5479