

# 都筑区防災マップ

※洪水浸水想定区域は、横浜市内のみ掲載しています。



### 凡例

- 危険箇所(学校) (72カ所) Disaster management bases
- 各地域防災拠点エリア Disaster management base area boundaries
- 広域避難場所 (7カ所) Wide-area evacuation sites
- 仮設避難所 (29カ所) Temporary first-aid stations
- 仮設教習所 (2カ所) Temporary first-aid stations
- 緊急給水栓 (42カ所) Emergency water hydrants
- 緊急給水栓 (42カ所) Emergency Underground Water Storage Tanks
- 配水池 (2カ所) Distribution reservoirs
- 緊急給水栓 (42カ所) Earthquake-resistant water faucet
- 災害用非常電源 (42カ所) Emergency power source (UPS)
- 非常用非常電源 (42カ所) Emergency power source (UPS)
- 消防団員集合場 (2カ所) Fire fighting assembly areas
- ヘルicopter搬送拠点 (4カ所) Helicopter landing areas
- 帰宅困難者一時滞在施設 (11カ所) Temporary shelter for disaster victims
- 防災用スピーカー (13カ所) Speakers for disaster prevention
- 緊急輸送路 Emergency transportation routes
- 土砂災害警戒区域 (Yellow Zone) Landslide Hazard Warning Areas
- 土砂災害特別警戒区域 (Red Zone) Landslide Special Warning Areas
- 急傾斜地崩壊危険区域 Steep slope areas in danger of failure

### 洪水浸水想定区域 (想定最大規模)

想定し得る最大規模の降雨 (2日間約792mm) を前提として、川の水があふれた場合や堤防が壊れた場合をシミュレーションにより予測したものです。

なお、この洪水浸水想定区域は、前提となる降雨を超えるような大雨、下水道等からの浸水、水路の氾濫等を考慮していませんので、青色で示している区域でも浸水が発生する場合があります。実際の浸水深と異なる場合があります。

浸水深のめやす

- 5.0~10.0m
- 3.0~5.0m
- 1.0~3.0m
- 0.5~1.0m
- 0.1~0.5m

## 避難場所等一覧

### 地域防災拠点一覧

学校名	所在地	索引	対象区域 (町名)
山田小学校	東山三丁目29-1	I-3	東山町、東山三丁目、東山四丁目
東山田小学校	東山一丁目4-1	H-2	東山一丁目、東山二丁目、北山七丁目 (ラビビル)
南山田小学校	南山二丁目27-1	G-3	南山町一丁目、南山二丁目、南山三丁目
北山田小学校	北山五丁目14-1	G-2	北山一丁目、北山二丁目、北山三丁目、北山四丁目、北山五丁目、北山六丁目、北山七丁目、北山八丁目
すみれが丘小学校	すみれが丘34	F-2	すみれが丘
牛久保小学校	牛久保一丁目23-1	F-3	牛久保一丁目、牛久保二丁目、牛久保三丁目
中川小学校	大榎町240	H-4	南山田町一丁目、大榎町一丁目、早瀬一丁目、早瀬二丁目
中川中学校	牛久保二丁目21-1	G-4	大榎町一丁目、大榎西、牛久保一丁目、牛久保二丁目、牛久保三丁目、早瀬一丁目、早瀬二丁目、早瀬三丁目、早瀬四丁目、早瀬五丁目、早瀬六丁目
都筑小学校	中川六丁目2-1	E-3	加賀原一丁目、加賀原二丁目、川和台
中川西小学校	中川一丁目3-1	E-3	中川一丁目 (港北ガーデンビル)
中川西中学校	中川二丁目1-1	D-2	中川一丁目、中川二丁目、中川三丁目、あゆみが丘
茅ヶ崎小学校	茅ヶ崎南一丁目11-1	F-6	茅ヶ崎南一丁目 (港北ファミリービル)、茅ヶ崎南二丁目、茅ヶ崎南三丁目、茅ヶ崎南四丁目、茅ヶ崎南五丁目、茅ヶ崎南六丁目
茅ヶ崎東小学校	茅ヶ崎東二丁目11-1	F-5	茅ヶ崎東一丁目、茅ヶ崎東二丁目、茅ヶ崎東三丁目、茅ヶ崎東四丁目、茅ヶ崎東五丁目、茅ヶ崎東六丁目
茅ヶ崎南中学校	茅ヶ崎南一丁目10-1	F-6	茅ヶ崎南一丁目 (港北ファミリービル)、茅ヶ崎南二丁目、茅ヶ崎南三丁目、茅ヶ崎南四丁目、茅ヶ崎南五丁目、茅ヶ崎南六丁目

### 福社避難所一覧

施設種別	施設名	所在地	索引
地域ケアプラザ	横浜市葛谷地域ケアプラザ	葛谷16-3	D-7
	東山田地域ケアプラザ	東山田270	I-3
	横浜市加賀原地域ケアプラザ	加賀原一丁目22-32	C-8
	横浜市新築地域ケアプラザ	新築19-19	H-6
	横浜市中川地域ケアプラザ	中川一丁目1-1	E-2
特別養護老人ホーム	ハートフルガーデン川和	川和1660	B-9
	ハピネス都筑	牛久保町1808-3	E-1
老人福祉センター	ウィア都筑	池辺	E-8
	横浜市つつき緑寿荘	葛谷2-1	D-6
介護老人保健施設	都筑ハートフルステーション	東山田1357	I-3
	ヒルトップ池辺	大榎町74-9	H-4
児童発達支援センター	横浜市茅ヶ崎老人保健施設	茅ヶ崎東五丁目8-7	G-5
	障害者福祉サービス事業所	ワーク中川	中川二丁目8-26
障害者地域活動ホーム	サムズアップ	東山田270	I-3
	つづき地域活動ホームさびさび	牛久保一丁目33-1	F-3
横浜市多機能型拠点	つつきの家	佐江戸町509-6	C-10

### 広域避難場所一覧

施設名	該当区域	施設名	該当区域
勝田高地	勝田町、新築町、勝田南一丁目、早瀬一丁目、早瀬二丁目、大榎町、大榎西、牛久保一丁目、牛久保二丁目、茅ヶ崎南	山崎公園一帯	中川一丁目、中川二丁目、牛久保一丁目、牛久保二丁目、あゆみが丘
川和高校都田公園一帯	加賀原一丁目、加賀原二丁目、川和台、富士見が丘	葛ヶ谷公園一帯	茅ヶ崎南四丁目、茅ヶ崎南五丁目、茅ヶ崎南六丁目、茅ヶ崎南七丁目、茅ヶ崎南八丁目、茅ヶ崎南九丁目、茅ヶ崎南十丁目
かしの木台ハイム一帯	在田東町、在田東一丁目、在田二丁目、在田三丁目、在田四丁目、在田五丁目、在田六丁目、在田七丁目、在田八丁目、在田九丁目、在田十丁目	茅ヶ崎公園一帯	茅ヶ崎南一丁目、茅ヶ崎南二丁目、茅ヶ崎南三丁目、茅ヶ崎南四丁目、茅ヶ崎南五丁目、茅ヶ崎南六丁目、茅ヶ崎南七丁目、茅ヶ崎南八丁目、茅ヶ崎南九丁目、茅ヶ崎南十丁目
横浜国際プール一帯	南山田町、南山田一丁目、南山田二丁目、南山田三丁目、南山田四丁目、南山田五丁目、南山田六丁目、南山田七丁目、南山田八丁目、南山田九丁目、南山田十丁目		

### 災害時給水所一覧

#### 緊急給水栓

設置場所 (学校)	所在地	索引	設置場所 (学校)	所在地	索引
山田小学校	池辺町2831	E-8	牛久保公園	牛久保一丁目24	F-3
都田小学校	池辺町2831	E-8	南山公園	中川二丁目17	E-2
都田南小学校	池辺町2831	E-8	山崎公園	中川二丁目17	E-2
中川小学校	大榎町240	H-4	山崎公園	中川二丁目17	E-2
茅ヶ崎南小学校	茅ヶ崎南一丁目11-1	F-6	葛ヶ谷公園	茅ヶ崎南三丁目11	E-4
茅ヶ崎東小学校	茅ヶ崎東二丁目11-1	F-5	葛ヶ谷公園	茅ヶ崎南三丁目11	E-4
茅ヶ崎南中学校	茅ヶ崎南一丁目10-1	F-6	葛ヶ谷公園	茅ヶ崎南三丁目11	E-4
大原みなみ公園	茅ヶ崎南四丁目7	E-6	葛ヶ谷公園	茅ヶ崎南三丁目11	E-4

#### 災害用地下給水タンク

設置場所	所在地	索引	設置場所	所在地	索引
山田小学校	東山三丁目29-1	I-3	中川西中学校	中川二丁目11-1	D-2
北山田小学校	北山五丁目14-1	G-2	中川西中学校	中川二丁目11-1	D-2
茅ヶ崎南小学校	茅ヶ崎南一丁目11-1	F-6	中川西中学校	中川二丁目11-1	D-2
勝田小学校	勝田町266	H-5	中川西中学校	中川二丁目11-1	D-2

#### 配水池

施設名	所在地	索引
牛久保配水池	牛久保三丁目27	E-1
北山田配水池	北山二丁目14	C-7

#### 耐震給水栓

施設名	所在地	索引
在田南小学校	在田南2-5-2	C-5
茅ヶ崎南小学校	長坂13-1	E-6
北山田小学校	北山五丁目14-1	G-2
在田小学校	在田南町694	D-3

#### ヘリコプター搬送拠点一覧

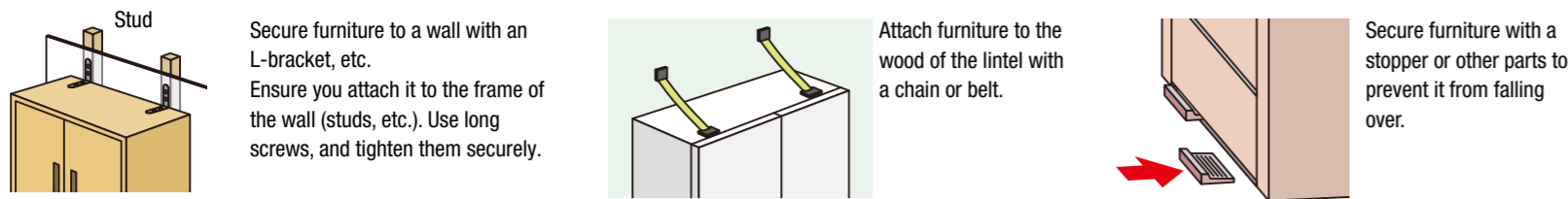
場所	所在地	索引
葛ヶ谷公園	長坂15	D-6
牛久保公園	牛久保三丁目28	F-3
早瀬公園	早瀬二丁目6	H-5
JA横浜きたぐらウンド	東山田1401	F-7

発行元：都筑区役所総務課、区民生活課、都筑区茅ヶ崎中央32-1 電話番号：948-2212 ファックス番号：948-2208

## Preparing your home (Inspecting your home/Preventing furniture from falling over)

### Measures to prevent furniture from falling over, falling down, or moving

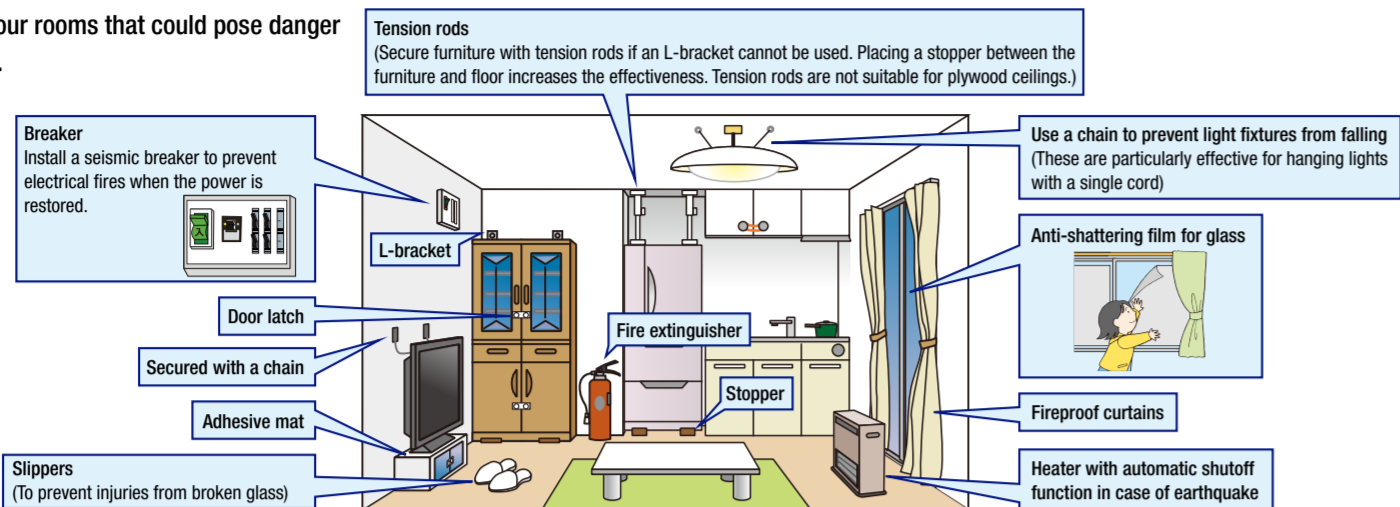
#### Correctly use disaster management equipment to secure furniture



#### Consider the layout of your furniture.

- Position furniture so that it will not block any entrances or exits even if it falls over.
- Do not place any beds where a dresser could fall over.

#### Check areas in your rooms that could pose danger in an earthquake.



### Inspecting and renovating homes for earthquake resistance or demolishing them

Buildings constructed with earthquake resistance standards from before the end of May 1981 are prone to collapse during an earthquake. Significant damage was caused by the Great Hanshin earthquake in 1995. The Yokohama City Housing and Architecture Bureau subsidized the cost of inspecting, renovating, and demolishing\* wooden homes and apartments constructed with the old standards. (There are also other requirements.) \* Demolition of condominiums is not covered by the subsidies.

Inquiries: Yokohama City Housing and Architecture Bureau Housing Disaster Prevention Division TEL: 045-671-2943 FAX: 045-663-3255

## Preparations at home (Extra supplies/Emergency goods/Emergency pet goods)

### Preparing extra supplies - Prepare at least 3 days' worth of food and water, and 1 weeks' worth if possible -

It could be difficult to acquire supplies immediately after a disaster. Keep **at least 3 days' worth** of food and supplies necessary for daily life in your home.

#### Items to prepare at home

- Food:** hardtack, canned food, instant food, chocolate, etc. Instant foods are convenient. Prepare foods that are easy to digest.
- Drinking water:** 3 liters per person per day. At least 3 days' worth.
- Toilet packs, fuel, etc.:** Toilet packs, candles, dry cell batteries, matches, portable stove, gas cartridges, etc.

### Prepare an emergency supply bag

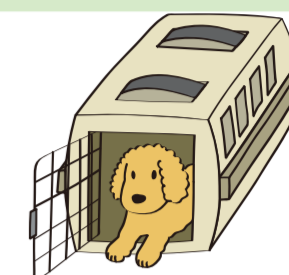
Put the required supplies into a backpack, etc., so that you can take it immediately in case of emergency.

- |   |   |  |  |
|---|---|--|--|
| <input type="checkbox"/> Water (plastic bottles)      | <input type="checkbox"/> Tissues, wet wipes                         | <input type="checkbox"/> Rope, duct tape               | Other items  |
| <input type="checkbox"/> Food                         | <input type="checkbox"/> Masks                                      | <input type="checkbox"/> Plastic bags                  | <input type="checkbox"/> Spare glasses             |
| <input type="checkbox"/> Plates, cups (paper/plastic) | <input type="checkbox"/> Medical supplies                           | <input type="checkbox"/> Writing utensils, notebook    | <input type="checkbox"/> Disinfectant              |
| <input type="checkbox"/> Hats, helmet                 | <input type="checkbox"/> Regular medications (prescription record)  | <input type="checkbox"/> Copy of health insurance card | <input type="checkbox"/> Supplies for oral hygiene |
| <input type="checkbox"/> Coats, underwear             | <input type="checkbox"/> Portable radio                             | <input type="checkbox"/> Personal identification       | <input type="checkbox"/> Paper diapers             |
| <input type="checkbox"/> Rain gear                    | <input type="checkbox"/> Flashlight, lantern (with extra batteries) | <input type="checkbox"/> Cash (including coins)        | <input type="checkbox"/> Formula                   |
| <input type="checkbox"/> Toilet pack                  | <input type="checkbox"/> Cellphone charger                          | <input type="checkbox"/> Copy of bank book             | <input type="checkbox"/> Milk bottle               |
| <input type="checkbox"/> Toilet paper                 | <input type="checkbox"/> Matches, lighter                           |  |  |
| <input type="checkbox"/> Toiletries, towels           | <input type="checkbox"/> Work gloves                                |  |  |

### Pet owners should check the following

Prepare evacuation supplies and pet food for your valued pets.

- |   |  |
|---|--|
| <input type="checkbox"/> Cage, carrier bag  | <input type="checkbox"/> Pet notebook                  |
| <input type="checkbox"/> Food, water (at least 5 days' worth, but ideally at least 7 days' worth) | <input type="checkbox"/> Dish, toys                    |
| <input type="checkbox"/> Therapeutic food, medication (as needed)                                 | <input type="checkbox"/> Towel, brush                  |
| <input type="checkbox"/> Spare collar and leash (non-elastic)                                     | <input type="checkbox"/> Plastic bags                  |
| <input type="checkbox"/> Pet sheets, cat litter   | <input type="checkbox"/> Toilet paper, newspaper, etc. |



## Preparing your home (Apartment preparations/What to do if you cannot return home)

### Apartment preparations

Your daily life in a mid-rise apartment could become difficult when lifelines cease to be available. Potential challenges include confirming the safety of residents on each floor, providing aid, and other problems that occur after a disaster. Elevators may stop working, requiring greater use of the stairs and posing an obstacle when leaving the building. If your home is safe, you do not need to evacuate. However, there are certain preparations that should be taken by those living in apartments.

#### When shaking occurs in a condominium

- In a high-rise building, strong but slow shaking increases the risk of furniture falling over, falling down, or moving. It is all the more important to secure furniture.

#### Extra supplies

- In addition to having extra supplies for your own household, your building should also have emergency supplies and rescue equipment for community use.

#### Cooperating with the management association and other residents

- In an apartment building, it is vital to cooperate with other residents on your floor. Check notifications from the management association on disaster drills and inspections of disaster equipment.
- Be aware of the number of households on your floor and their age group. Cooperate with the management association to create a disaster response manual, etc.

#### Evacuation routes

- During a disaster, you might not be able to use the elevator or leave from the entrance of your home. Therefore, check the location of emergency stairs and doors, and learn how to use the emergency hatch (emergency exit) and breakable partitions on your veranda.
- Do not place objects near evacuation equipment.

#### Elevators

- Do not use the elevator during an earthquake. If an earthquake occurs while you are in the elevator, press all of the floor buttons, and get off where the elevator stops.

#### Disaster/Fire equipment

- Check the locations of fire extinguishers, fire alarms, and water tanks in common areas.

### What to do if you cannot return home

Please avoid making hasty decisions to change locations.

- If a major earthquake occurs in the Kanto region or Yamanashi prefecture, trains and other forms of public transportation could come to a halt, preventing you from going home.
- If everyone goes home simultaneously, the streets and station areas will become severely crowded, posing significant dangers.
- Search system for temporary accommodations if you cannot return home: **Navi for Temporary Accommodations**. You can use your cellphone to search for facilities that have available openings. <http://www.city.yokohama.lg.jp/b-m/> (Cellphones) <http://www.city.yokohama.lg.jp/b-sp/> (Smartphones)

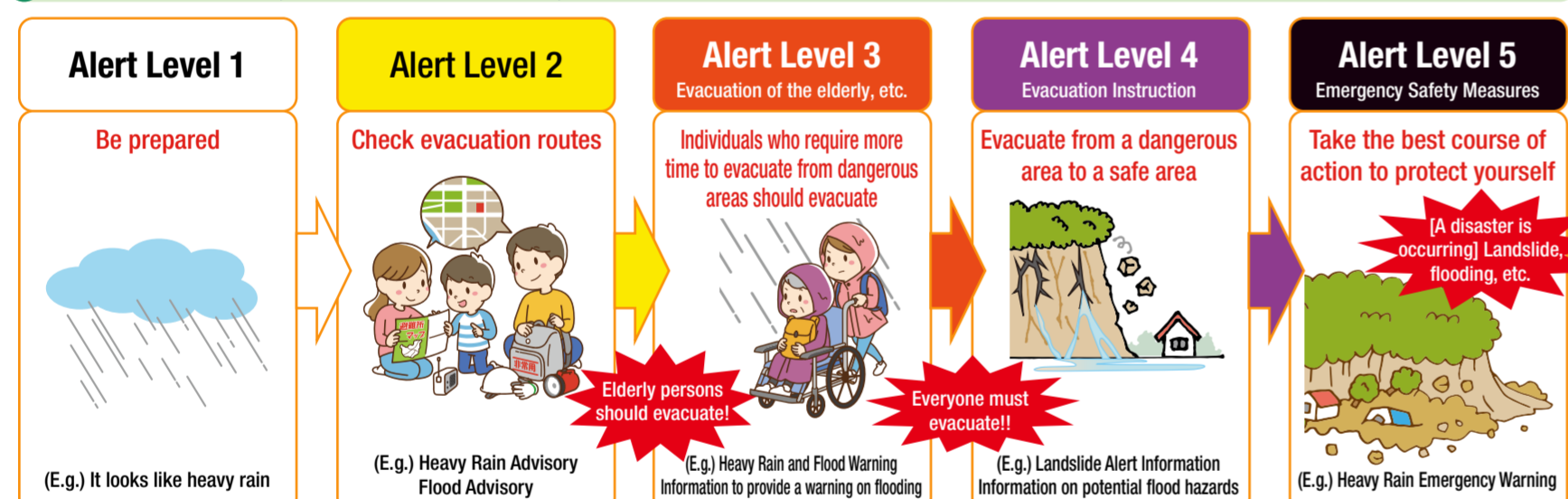
**Preparations for staying one or more nights at work or school**

If your home is far from your workplace or school, consider staying at work or school for at least one night and then walking home. Waiting until the day after to go home is a highly effective way to reduce congestion caused by many people walking home at the same time. Consider keeping extra supplies at work so that you can stay there for one or more nights.

**Example items:** Radio, Food, Drinking water, Sneakers, Portable toilet, etc.

## Prepare for storm and flood disasters

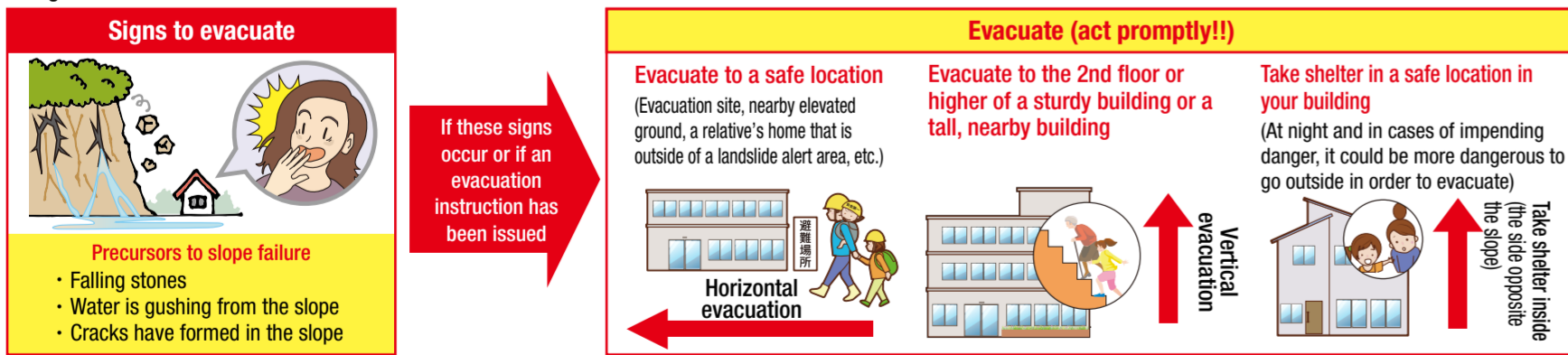
### Weather information, evacuation information, etc.



In general, evacuation sites will be opened in line with the issuance of evacuation information from the government\*.

Alert Level	Issued/announced by	Actions to take	Evacuation information (Yokohama City)	Weather information (JMA)	Water level criteria for the release of evacuation information (graphical representation)
Alert Level 5	Yokohama City	<b>Danger to life. Take immediate safety measures!</b> A disaster is already occurring. Take the best course of action to protect yourself.	Information on occurrence of disaster	Heavy Rain Emergency Warning, etc.	Information on flooding
Alert Level 4	Yokohama City	<b>Total evacuation from dangerous areas</b> If it is dangerous to go to an evacuation site, evacuate to a safe location nearby or a location that is safer than your home.	Evacuation Instruction	Landslide Alert Information, etc.	Information on potential flood hazards
Alert Level 3	Yokohama City	<b>The elderly, etc. should evacuate from dangerous places.</b> Individuals who require more time to evacuate (including the elderly, the disabled, infants, etc.) and the individuals supporting them should begin evacuating to an evacuation site. Other individuals should begin evacuation preparations by contacting family and gathering their things. They should evacuate promptly if they feel the situation is dangerous.	Evacuation of the elderly, etc.	Heavy Rain Warning (landslide, inundation, etc.), Flood Warning, etc.	Information to provide a warning on flooding

### Signs to evacuate/Evacuations



### Evacuation

To evacuate means to avoid danger and secure your safety. Going to an evacuation site is not the only form of evacuation. During a disaster, if you are safe at home, evacuate vertically or otherwise stay at home. Also, consider your evacuation route and location in advance, such as going to a safe place like a friend or relative's house instead of a public evacuation site.

### Daily preparations

#### Hazard maps

Look for your house and the dangerous locations on the Tsuzuki Ward water hazard map and the Tsuzuki Ward landslide hazard map, and consider your route for evacuating to a safe location. These maps are distributed at the ward office and can be viewed on the website.



#### Yokohama City flood information

Water levels and camera feeds of rivers in and around Yokohama City are available in real time. You can check information on nearby rivers using the GPS function of your smartphone.



#### YY Disaster Map

The YY Disaster Map allows you to select and display general disaster information, such as estimated earthquake magnitudes and inundation risk areas. It is useful for raising disaster awareness and activities related to disaster mitigation.



## If an earthquake occurs

### Earthquake!

### Three rules for earthquakes

#### 1 Immediate personal safety

First take steps to ensure your safety, and exercise caution until the shaking subsides.

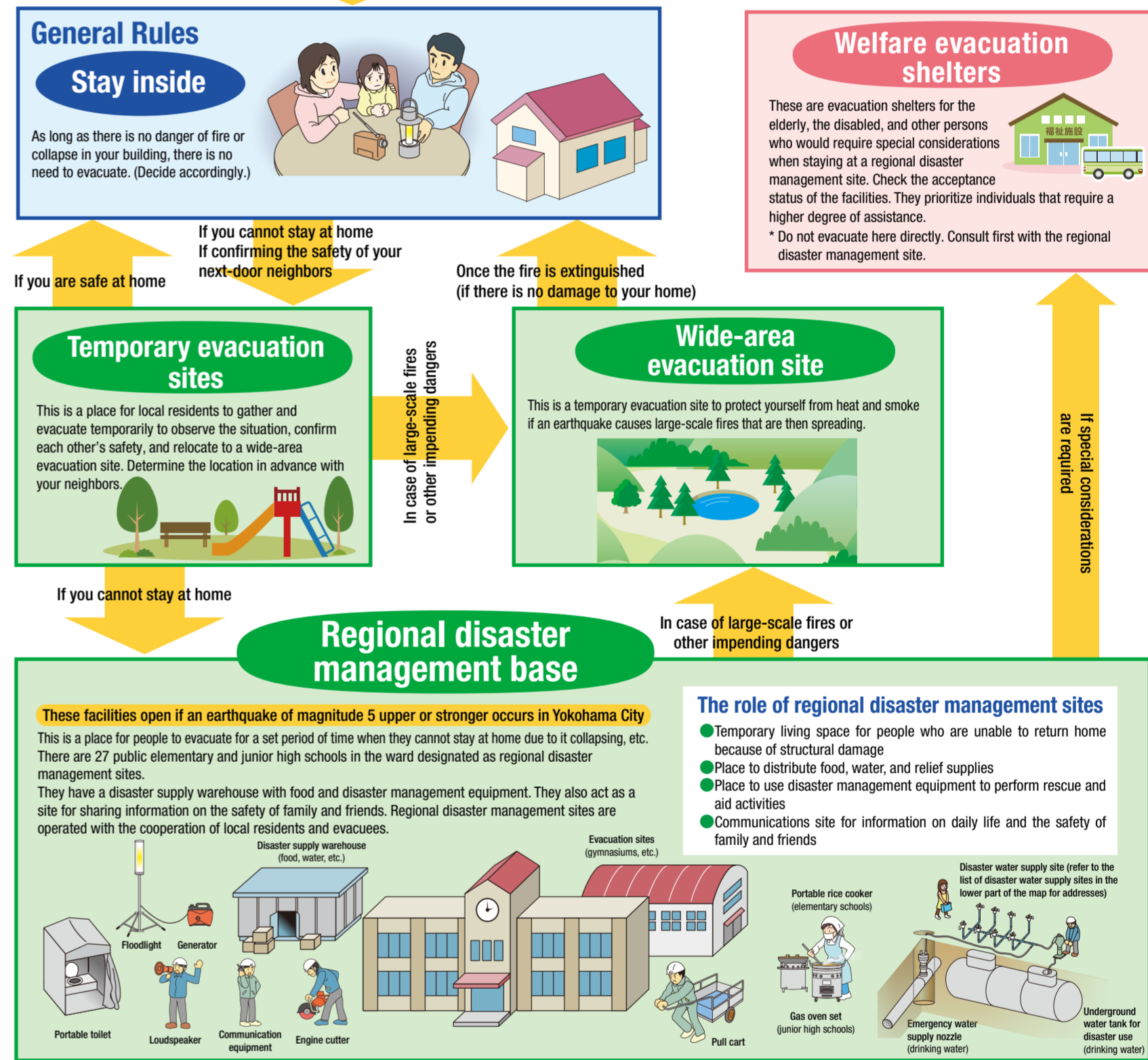
#### 2 Immediately respond to fires

If you are using a flame, remain calm and take care of the flame after the shaking stops. If there is a fire, calmly extinguish it.

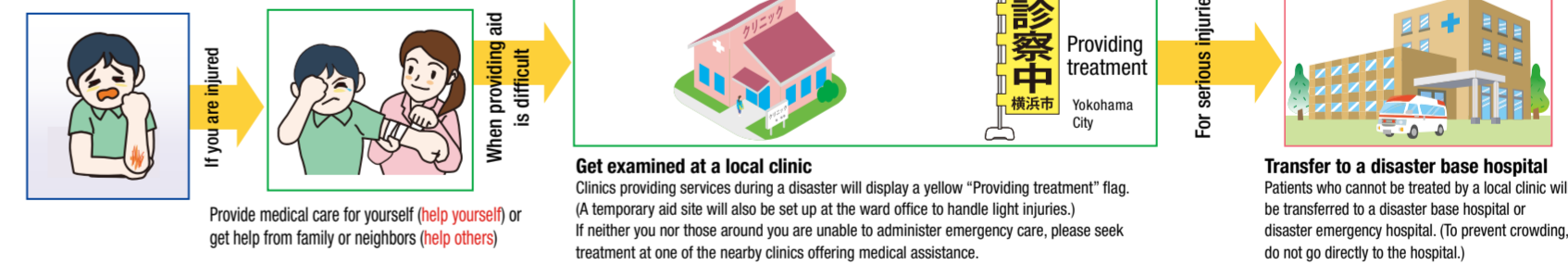
#### 3 Help your next-door neighbors

Confirm the safety of your next-door neighbors. Cooperating with your next-door neighbors could be a great help.

### What to do after an earthquake occurs?



### Were you injured? - Tsuzuki Ward medical system -



## Disaster information, Disaster Emergency Message Hotline

#### Disaster information

- Internet**
  - Tsuzuki Ward Administration Office website
  - Yokohama City General Affairs Bureau Disaster information
- Yokohama City disaster information email**
- X (Formerly Twitter)**
- Disaster app**

#### Disaster Emergency Message Hotline

171

Usage: Dial 171, record or play messages according to the instructions.

#### Disaster Message Board

https://www.web171.jp/

Cellphone Disaster Message Board

- NTT Docomo
- au by KDDI
- SoftBank Mobile

**Topics** - Try them out with your family - Try Disaster Emergency Message Dial and the disaster message boards with your family in preparation for emergencies. You can try them according to the following schedule.

- The 1st and 15th of every month
- New Year holiday period (January 1-3)
- Disaster Prevention and Volunteer Week (January 15-21)
- Disaster Prevention Week (August 30 through September 5)